

Via Heart Project AED Cabinet Troubleshooting Guide

Activar Indoor AED Cabinet (white)

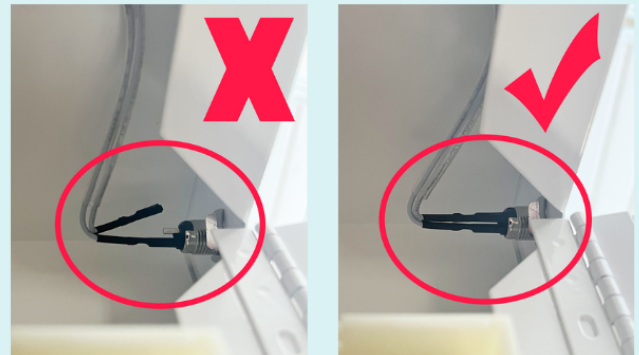
Alarm On/Off key switch is set to On

- ♥ Check the On/Off key switch on the upper right corner and ensure it is in the On position.
- ♥ If it is not, use the key inside to turn it on.



Alarm wires are connected

- ♥ Check the two black wires on the inside upper right wall above the alarm box, and ensure they are both properly connected.
- ♥ If a wire is disconnected, reconnect it by pushing it onto the metal rod sticking out of the cabinet.



Checking inside the alarm box

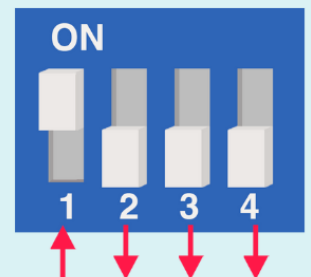
Open alarm box by removing the cover

- ♥ Using the corner of the alarm key or a coin, pop off the cover of the alarm box.
- ♥ Insert the key into the latch on the top of the box and push down and out.



Switchboard settings are correct

- ♥ The switchboard should have the "1" in the Up position, and all others in the Down position (alarm sounds when door is open and key switch is in On position).



Checking/changing the 9V battery (video linked)

- ♥ Make sure the 9 volt battery is connected.
- ♥ Replace the battery by disconnecting it and connecting a new one to the proper wires.