

Via Heart Project CR2 Wi-Fi Setup Guide



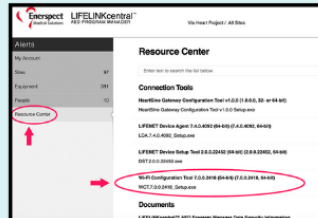
How to connect your LIFEPAK CR2 to Wi-Fi


Step 1 - Log in to LIFELINKcentral

- ♥ On a PC, log into LIFELINKcentral <https://lifelink.lifenetsystems.com/Profile/Logon> (Via has created an account for you. Look for a welcome email from LIFELINKcentral).

Step 2 - Download the Wi-Fi Configuration Tool to your PC

- ♥ Select *Resource Center*, then select *Wi-Fi Configuration Tool*.



- ♥ Click the  icon in the upper right corner to download the Wi-Fi Configuration Tool.

Step 3 - Install the Wi-Fi Configuration Tool

Double click the downloaded Wi-Fi tool file (*WCT.xxxxxx_Setup.exe*) to install it.

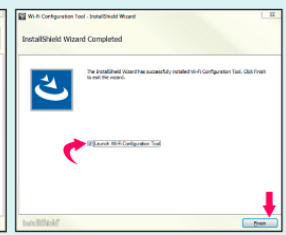
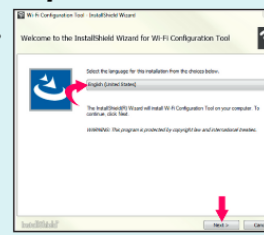
- ♥ If you don't see the file, look in your *Downloads* folder.
- ♥ If any security warnings appear, select *allow the file*.

The InstallShield Wizard will appear.

- ♥ Select your *language* and click *Next>*.

When you see the InstallShield Wizard Completed screen

- ♥ Make sure *Launch Wi-Fi Configuration Tool* checkbox is selected, then click *Finish*.

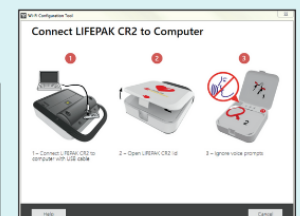


Step 4 - Run the Wi-Fi Configuration Tool and follow the onscreen instructions

In the Registration screen

- ♥ Enter the log in information for your LIFELINKcentral account.

Connect the USB cable to your CR2 AED, and connect the cable to your PC, as shown on screen.



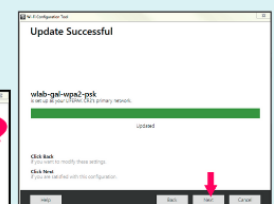
Step 5 - Connect to your Wi-Fi Network

In the Specify Wi-Fi Network Settings screen

- ♥ Select your *Wi-Fi network* (or click *Add Custom Network*) to enter your Wi-Fi network settings.
- ♥ Click *Next* to apply the settings.

When Wi-Fi setup is complete, you will see the Update Successful screen.

- ♥ Click *Next*.
- ♥ Disconnect the USB cable.
- ♥ Click *Close*.





Test CR2 Wi-Fi Connection/ Initiate Wi-Fi Status Check In

Take the AED to its intended location

Open the lid and **WAIT** for the voice prompts to begin.

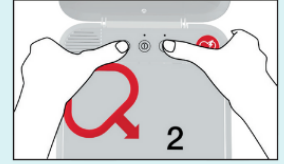
♥ Once the voice prompts start, immediately press and hold the LANGUAGE and CHILD MODE buttons simultaneously until you hear "Device ready."

Close the lid.

♥ The AED should say "Wi-Fi connection initiated" then "Connection in progress."

♥ After a pause, it should say "Connection established."

♥ The AED will update your online account with its current status. The AED beeps every few seconds during the update process.



When all updates are complete, you will hear "Communication complete, powering off."

Important Notes

Placement for Wi-Fi connected AED

♥ If the AED is placed far from where it is set up, please be sure to test the Wi-Fi connection at the location where the AED will be kept.

♥ If the AED is mobile, it may not always be connected to Wi-Fi. Once a month, when you have the AED near Wi-Fi, you can manually initiate a Wi-Fi check in using the instructions.

AEDs need humans to be 100% Rescue-Ready

♥ The AED can only check itself for internal functionality and supply status. A human must check to ensure the device is present, free of damage, and that it has a complete rescue kit.

When an AED is used

♥ As always, when an AED is used, report it to Via Heart Project using onlineoversight.com.

♥ If the AED is connected to Wi-Fi after a usage event, we will be able to download the data remotely and a loaner will not be necessary.

♥ New supplies will be sent to replace those used.

*A fully detailed guide for Wi-Fi set up can be downloaded using this link;
<https://mts.stryker.com/helpdesk/attachments/60003437018>
or Via can email you a copy upon request.*